

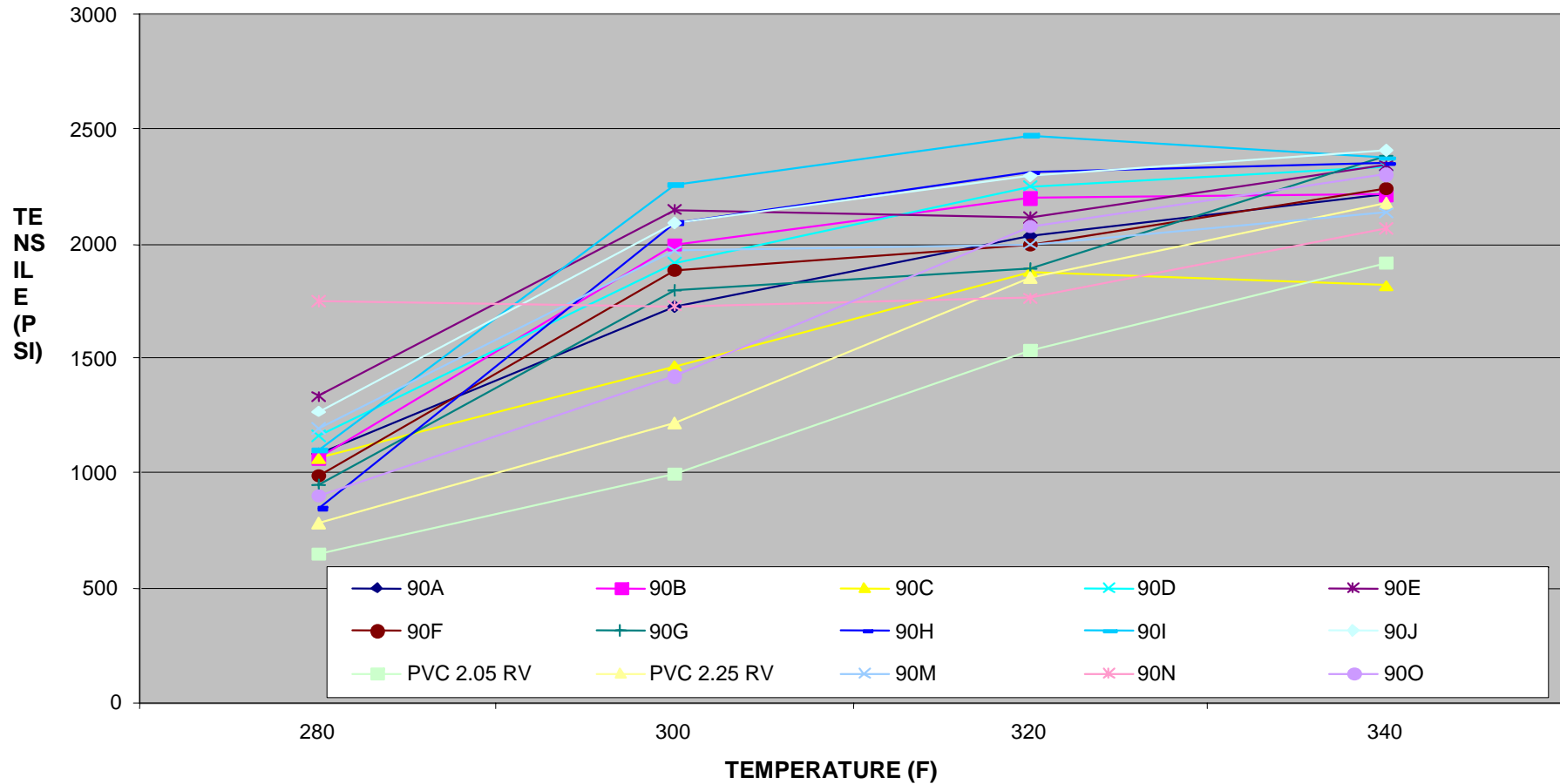


Copolymer Resin Study

Polymer Services and Innovations
date

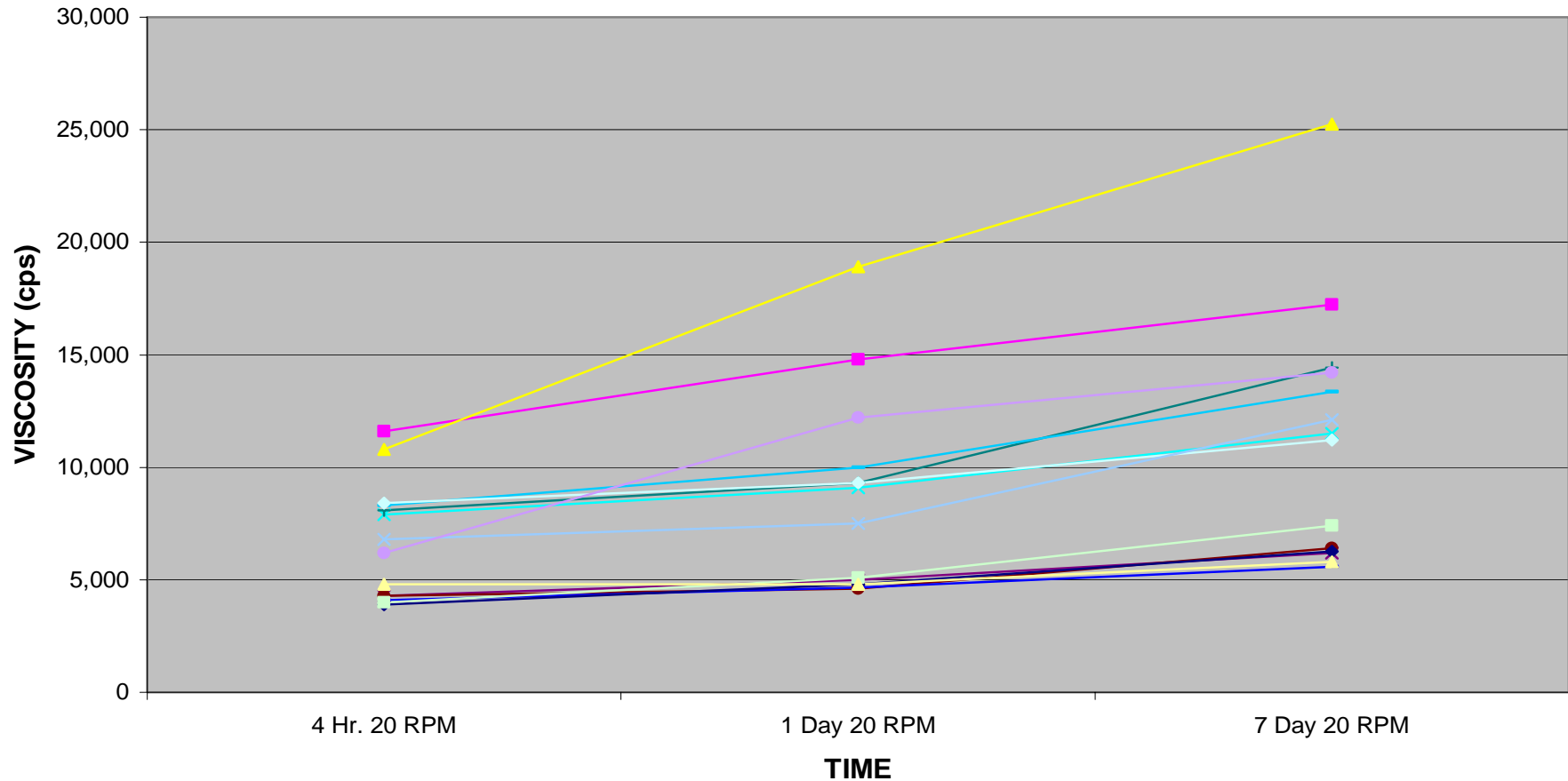
Polymer Services and Innovations
2111 S. West Ave., Suite 60
Waukesha, Wisconsin 53186
Phone: 1.262.446.2229
Fax: 1.262.446.2276
www.psandi.com

COPOLYMERS TENSILE STRENGTH



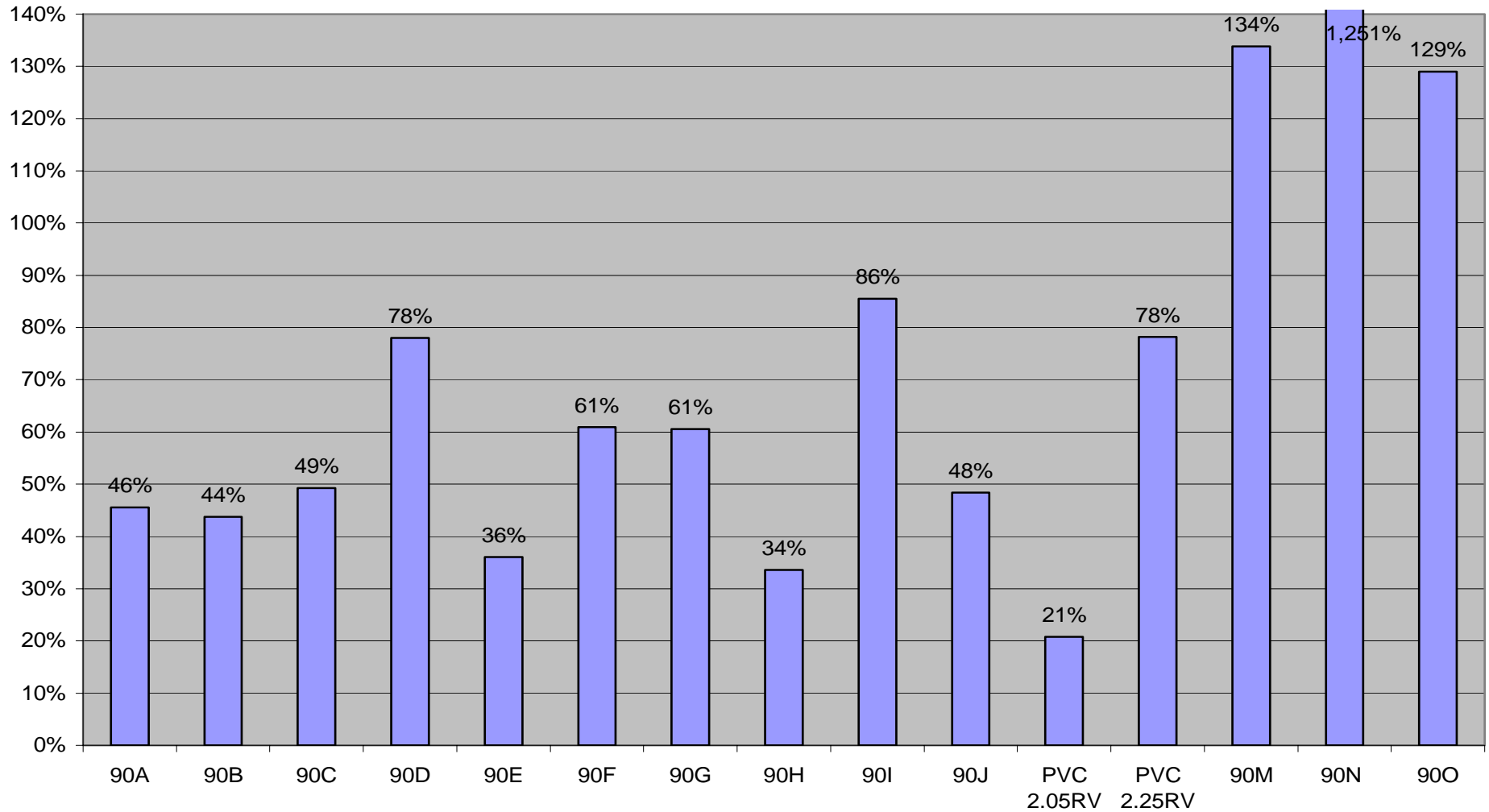
The information and data presented is believed to be accurate and reliable. It is based on specimens prepared under laboratory conditions, and thus may not represent an actual production environment. The data is given for information only and no warranties, expressed or implied, are made as we cannot guarantee the results of operations not under our direct control.

COPOLYMERS BROOKFIELD 20 RPM VISCOSITY



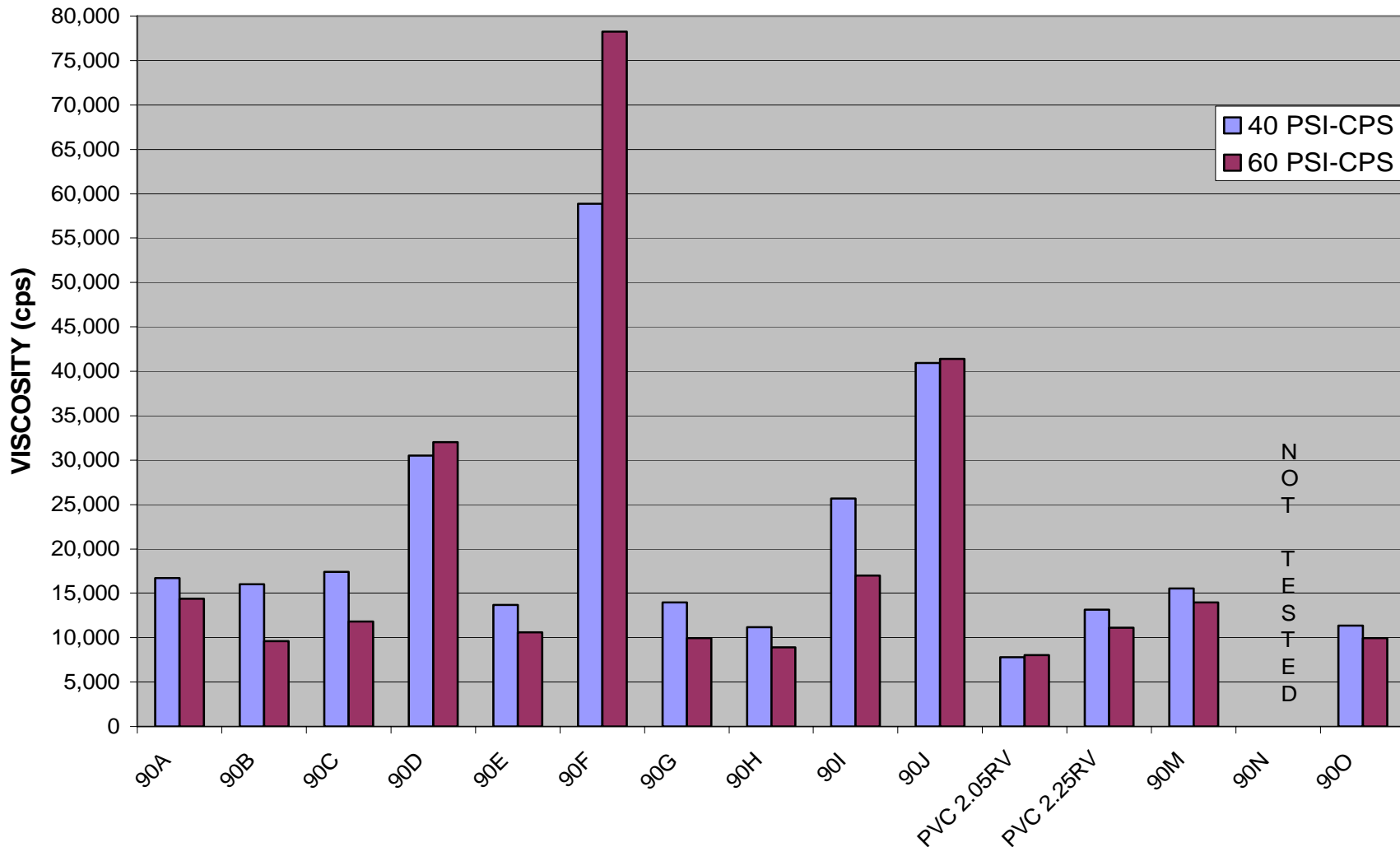
The information and data presented is believed to be accurate and reliable. It is based on specimens prepared under laboratory conditions, and thus may not represent an actual production environment. The data is given for information only and no warranties, expressed or implied, are made as we cannot guarantee the results of operations not under our direct control.

COPOLYMERS BROOKFIELD VISCOSITY INCREASE OVER 7 DAYS



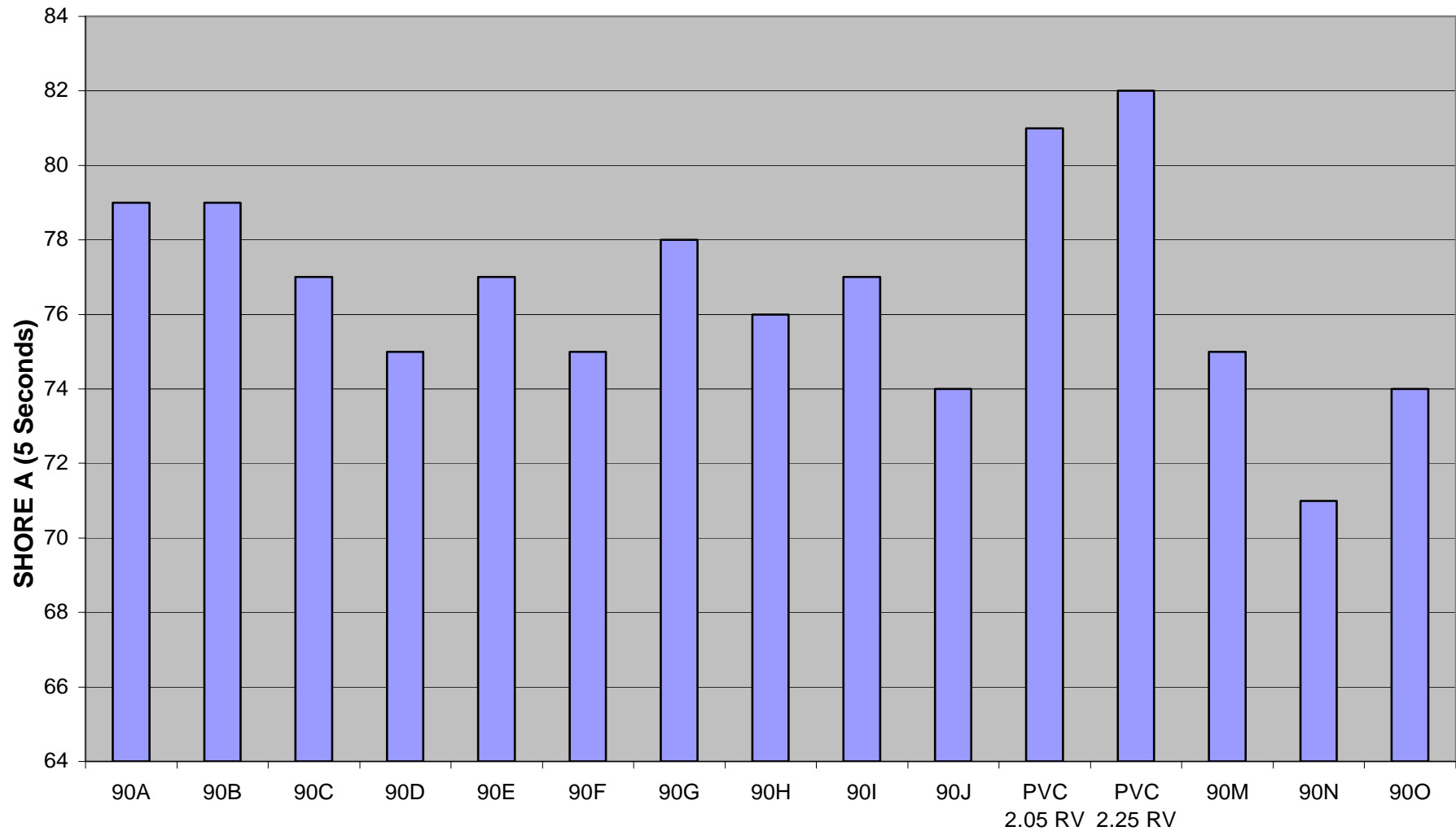
The information and data presented is believed to be accurate and reliable. It is based on specimens prepared under laboratory conditions, and thus may not represent an actual production environment. The data is given for information only and no warranties, expressed or implied, are made as we cannot guarantee the results of operations not under our direct control.

COPOLYMERS SEVERS VISCOSITY



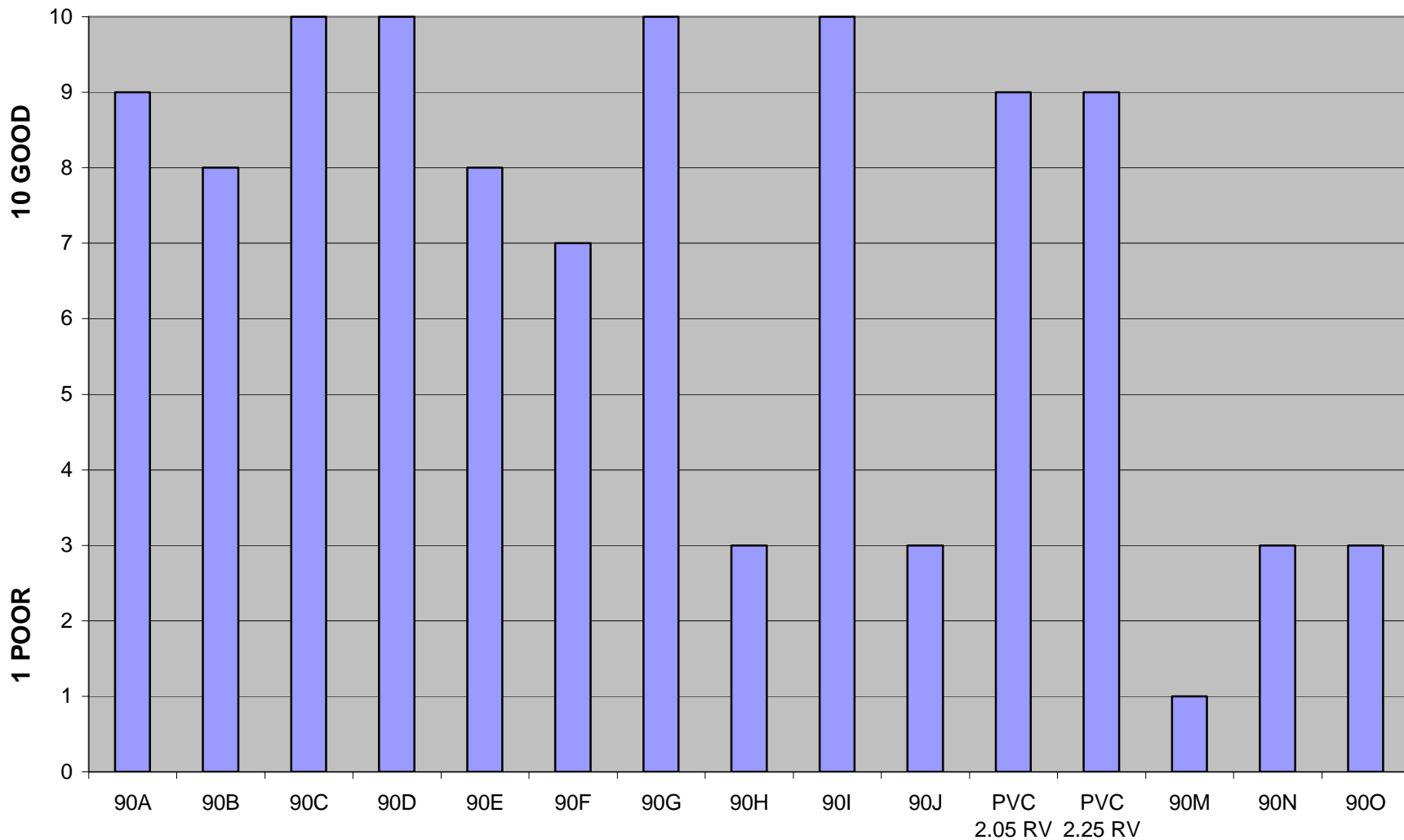
The information and data presented is believed to be accurate and reliable. It is based on specimens prepared under laboratory conditions, and thus may not represent an actual production environment. The data is given for information only and no warranties, expressed or implied, are made as we cannot guarantee the results of operations not under our direct control.

COPOLYMERS HARDNESS (5 SECONDS)



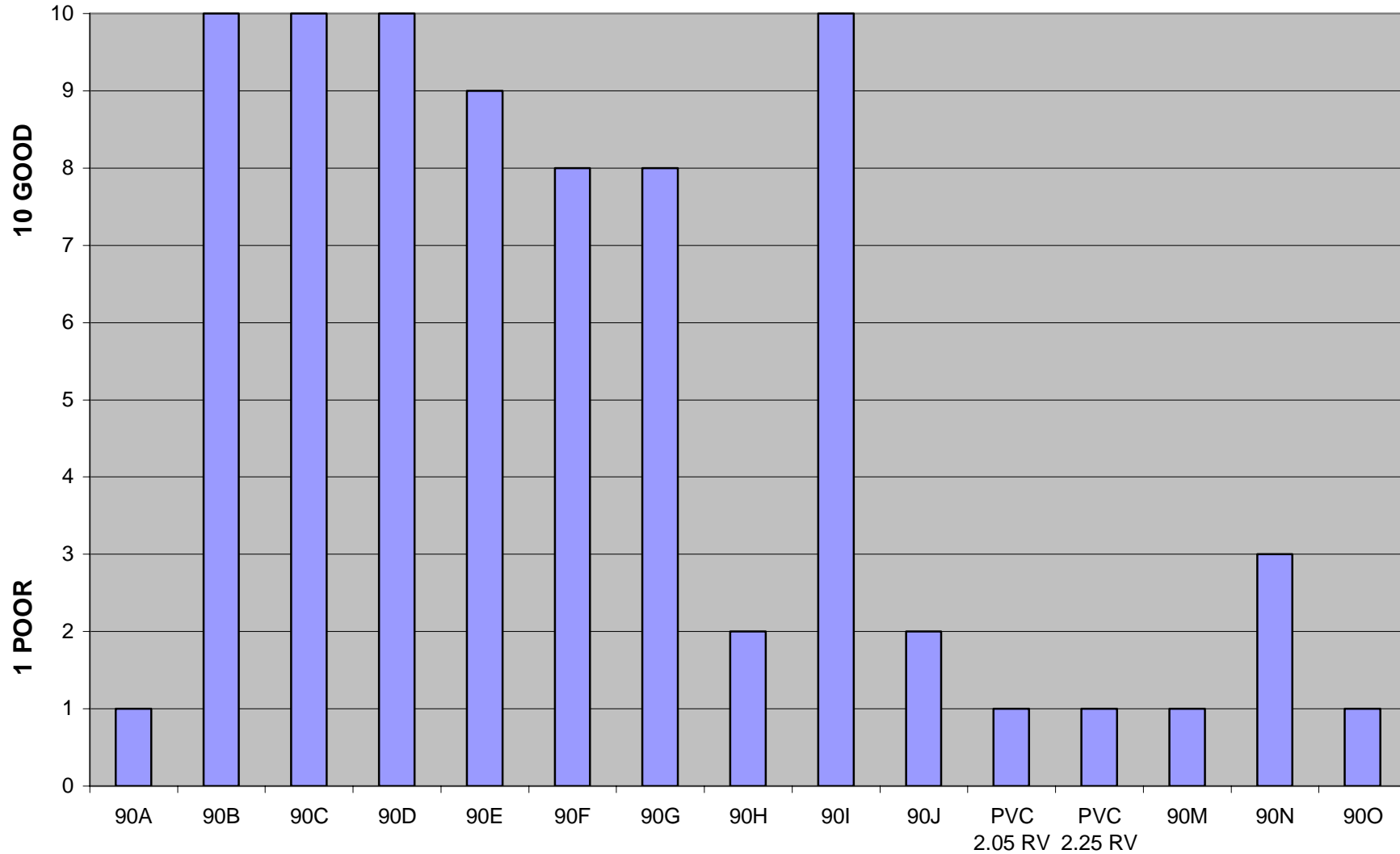
The information and data presented is believed to be accurate and reliable. It is based on specimens prepared under laboratory conditions, and thus may not represent an actual production environment. The data is given for information only and no warranties, expressed or implied, are made as we cannot guarantee the results of operations not under our direct control.

COPOLYMERS HEAT STABILITY



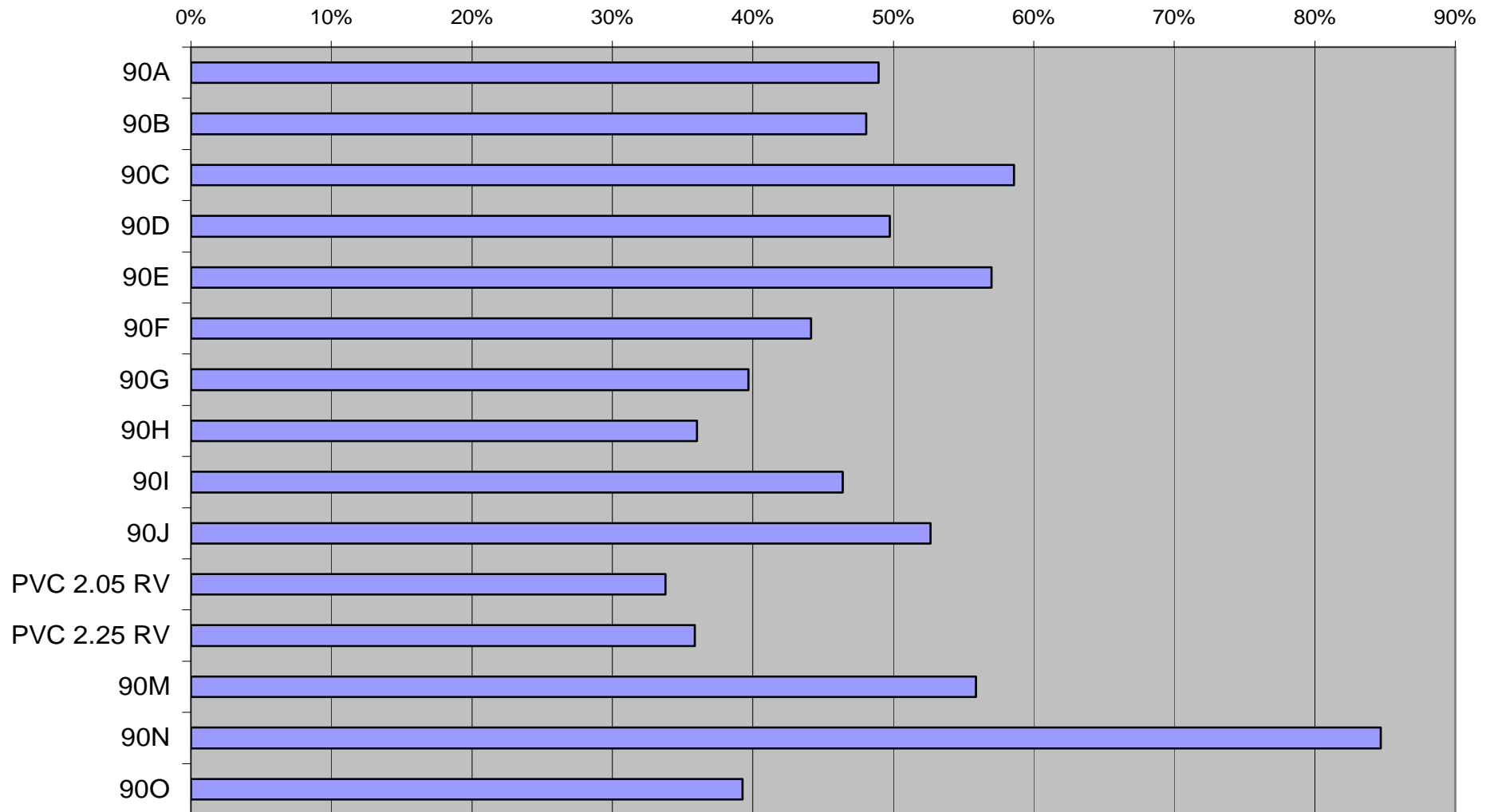
The information and data presented is believed to be accurate and reliable. It is based on specimens prepared under laboratory conditions, and thus may not represent an actual production environment. The data is given for information only and no warranties, expressed or implied, are made as we cannot guarantee the results of operations not under our direct control.

COPOLYMERS CLARITY



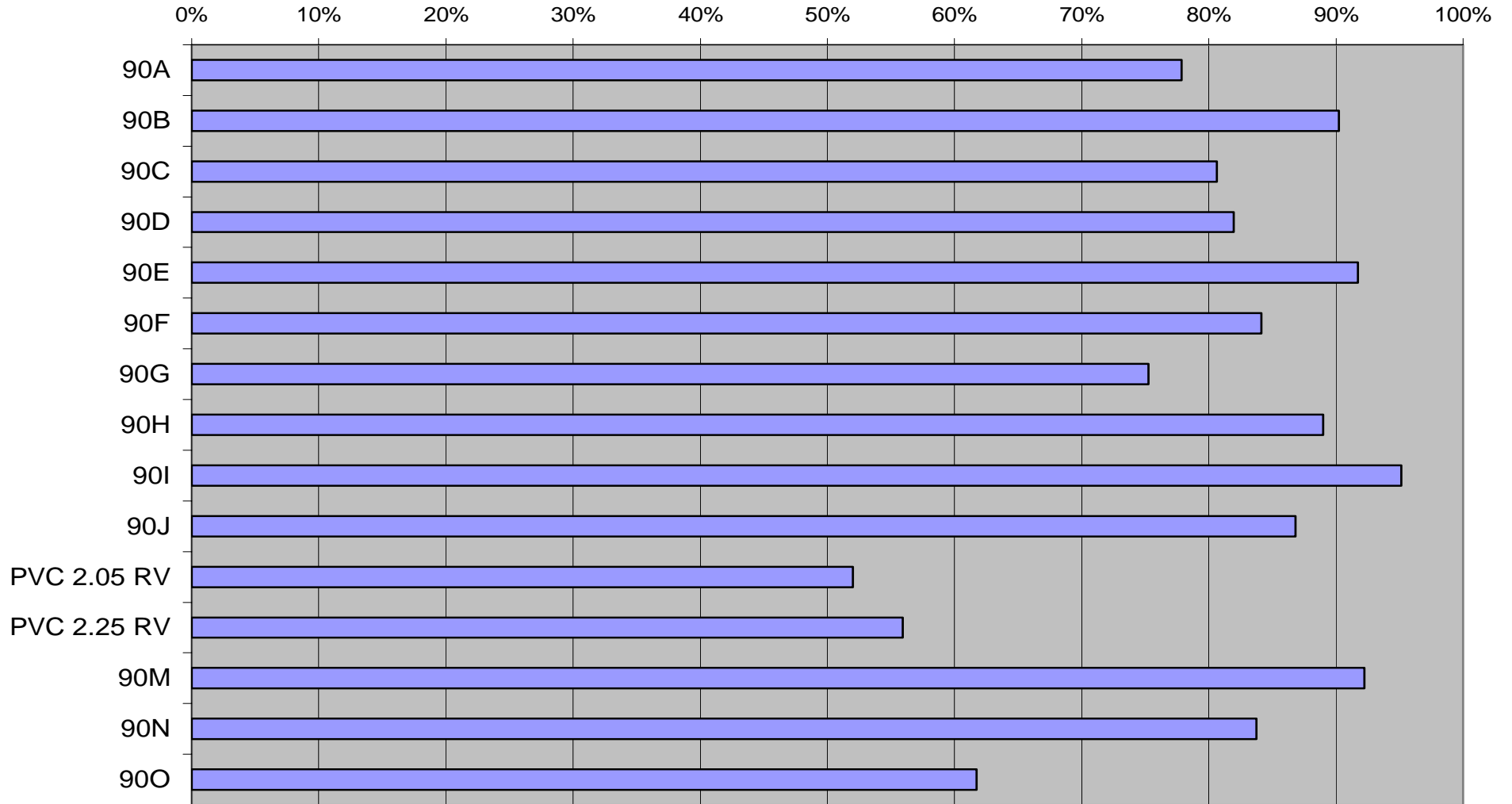
The information and data presented is believed to be accurate and reliable. It is based on specimens prepared under laboratory conditions, and thus may not represent an actual production environment. The data is given for information only and no warranties, expressed or implied, are made as we cannot guarantee the results of operations not under our direct control.

COPOLYMERS % TENSILE AT 280F VS. 340F



The information and data presented is believed to be accurate and reliable. It is based on specimens prepared under laboratory conditions, and thus may not represent an actual production environment. The data is given for information only and no warranties, expressed or implied, are made as we cannot guarantee the results of operations not under our direct control.

COPOLYMERS % TENSILE AT 300F VS. 340F



The information and data presented is believed to be accurate and reliable. It is based on specimens prepared under laboratory conditions, and thus may not represent an actual production environment. The data is given for information only and no warranties, expressed or implied, are made as we cannot guarantee the results of operations not under our direct control.